

# **NewBig Boy Steel/Timber Building Connector Page**

**ALL ASSF STEEL/TIMBER BIG BOY CONNECTORS IN ALL SIZES WILL BE REPRESENTED ON THIS PAGE. TO INCLUDE PICTURES OR DRAWINGS OF CONNECTORS, HOOP STRUCTURE PLACEMENT & LOAD CHARTS & PRICES OF ALL THE BIG BOY CONNECTORS TO INCLUDE SERIES NUMBERS BB-44, BB-46, BB-48, BB-66 & BB-88. FOR ANY INFORMATION ABOUT THE BIG BOY CONNECTORS NOT ADDRESSED ON THIS PAGE PLEASE CALL RON 480 343 9571**



**SPECIAL OFFER - FOR THE REST OF 2013 IF YOU ORDER 6 HOOP KITS OR MORE OF BB44 - BB46 - BB48 - BB66 & BB88 SERIES BIG BOY STEEL CONNECTORS DEDUCT 10% FROM HOOP KIT PRICING BELOW.**

# NEW DIY BUILDING PRODUCT RELEASE BY ALL STEEL SHED FRAMES

**THIS PAGE IS LONG AND HAS ALL OF THE INFORMATION YOU WILL NEED TO KNOW ABOUT OUR NEW SIZE OF BIG BOY CONNECTORS BEING OFFERED. WE INCLUDED EVERYTHING ON THIS PAGE SO WE WOULD NOT HAVE TO SEND YOU TO A NUMBER OF OTHER PAGES TO GET THE RIGHT INFORMATION. HOPE THIS HELPS YOU IN MAKING AN INFORMED DECISION.**

Thanks to the success of our heavy duty Big Boy series 4"x 4" steel/timber framing connectors for building cabins, sheds, shops, barns, homes and a whole host of other do it yourself economical quality shelters. We have invested & developed a new series of bigger steel/timber connectors for larger projects.

The single biggest question we were presented with by a sizeable percentage of the inquiring public was the question "DO YOU MAKE THEM WITH BIGGER SIZED STEEL THAT WILL TAKE BIGGER TIMBERS SO I CAN BUILD MY PROJECT OUT OF THICKER & HEAVIER MATERIAL? With that question being asked by a significant number of inquiry's we went back to the drawing board to be able better to serve our clients.

All Steel Shed Frames is happy to announce that we now fabricate & produce the Big Boy Connectors in 4 additional sizes of steel. The original size of the Big Boy Connector Series we still make with 4" x 4" x 1/4" wall square steel and will be known now as the BB-44 series. We still make that size plus we have added 4 additional sizes to accept bigger timbers for the do it yourselfer to build larger, heavier, higher projects.

## NEW SERIES & SIZES OF STEEL/TIMBER BIG BOY CONNECTORS OFFERED ARE AS FOLLOWS:

4"X 6" steel is BB-46 – SERIES, 4"X 8" steel is BB-48 SERIES- 6"X 6" steel is BB-66 SERIES & 8"X 8" steel is the BB-88 SERIES. All SERIES CONNECTORS are 1/4" WALL THICKNESS. THE NEW SIZES OF BB CONNECTORS ACCOMMODATE LIKE SIZE MILLED TIMBERS OR STEEL WITH 1/2" SMALLER OUTER DIMENSION TO EASILY BUILD STRONGER BUILDINGS. The BB-46, BB-48, BB-66 & BB-88 SERIES CONNECTORS CAN ONLY BE ORDERED W/ CONCRETE BASES OR THE UPPERS ONLY FOR POLE BARN TYPE CONSTRUCTION. SERIES BB-46, BB-48, BB-66 & BB-88 MADE IN ONLY 3/12 & 8/12 PITCHED ROOF LINES. OTHER QUESTIONS & PRICING CALL RON 480 343 9571

**Please see below hoop placement & load chart for each new size offered**

## ALL STEEL SHED FRAMES BB-44 SERIES HEAVY DUTY WELDED STEEL/TIMBER CONNECTORS

MADE FROM 4"X 4" 1/4" WALL SQ TUBE – 3/12 & 8/12 ROOF PITCH – ALL CONNECTOR KIT PRICES LESS WOOD

### CONCRETE APPLICATION W/ 3/12 or 8/12 PITCH - PER HOOP CONNECTOR KIT PRICING TO INCLUDE

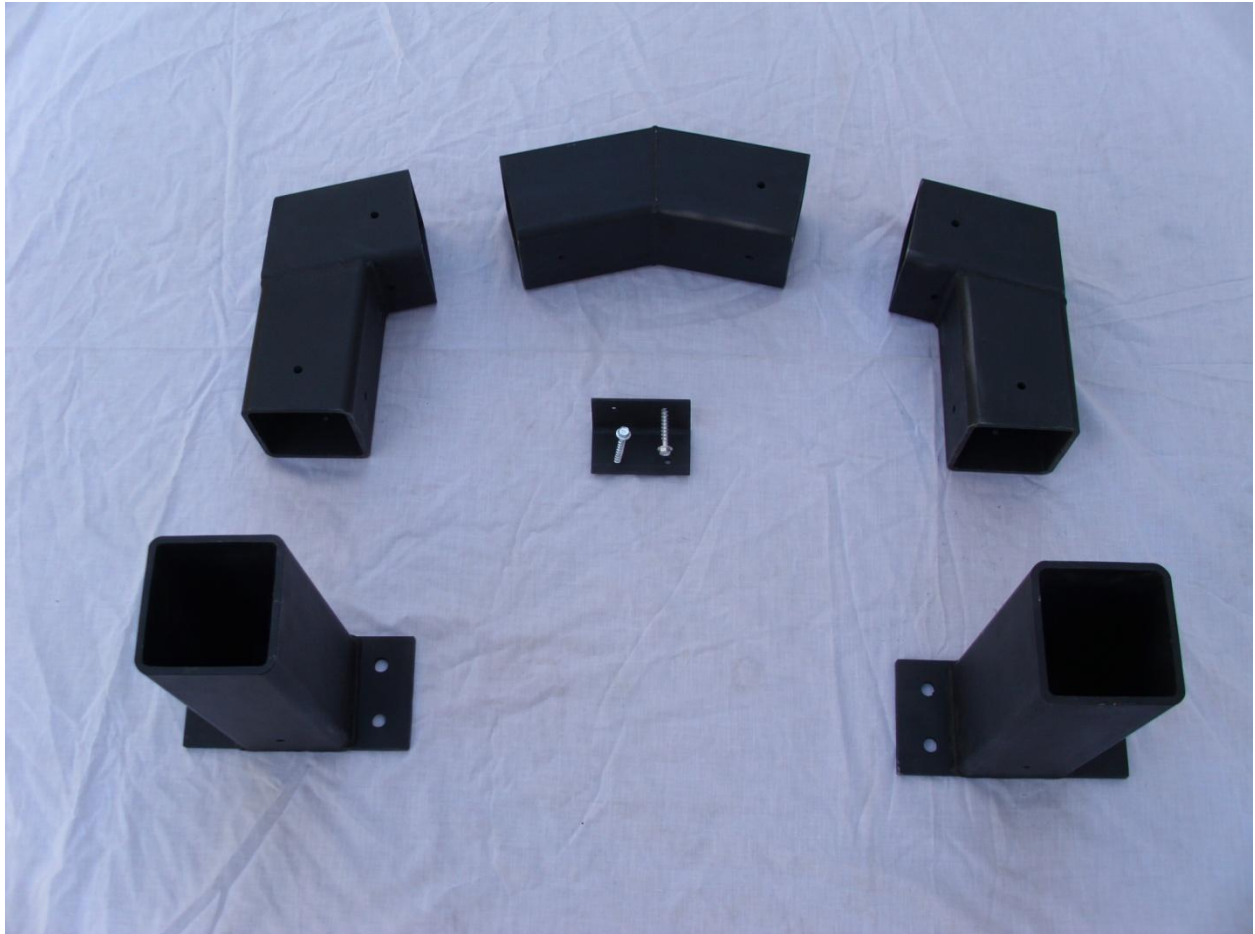
1 EACH PEAK CONNECTOR

2 EACH HIP CONNECTOR

2 EACH CONCRETE BASE CONNECTORS

TOTAL PRICE PER HOOP **SERIES BB-44** **\$163.50**

3 1/2" H/D Clips \$2.00 each. 1 1/2" lag bolts \$.35 cents each = 4 holes per clip. All connectors come with appropriate sized holes. 1"x 5" grade 8 thru & thru bolt with locking nut \$5.90 each 1/2" x 5" grade 8 thru & thru bolts with locking nut \$2.00 each to secure timber to base connector - 1/2" x 5 1/2" anchor bolts \$1.95 each for concrete application . Hole placement may change from time to time due to engineering requirements.



PART NUMBERS FOR THE SERIES BB-44 - 3/12 & 8/12 PITCHED ROOF LINES – **BB-44-CON-312PITCH** - **BB-44-CON-812PITCH**

**PORTABLE APPLICATION W/FLOOR STRUTS - 3/12 or 8/12 PITCH - PER HOOP KIT CONNECTOR PRICING**

**2 EACH BOTTOM OUTSIDE CORNERS**

**2 EACH HIP CONNECTORS**

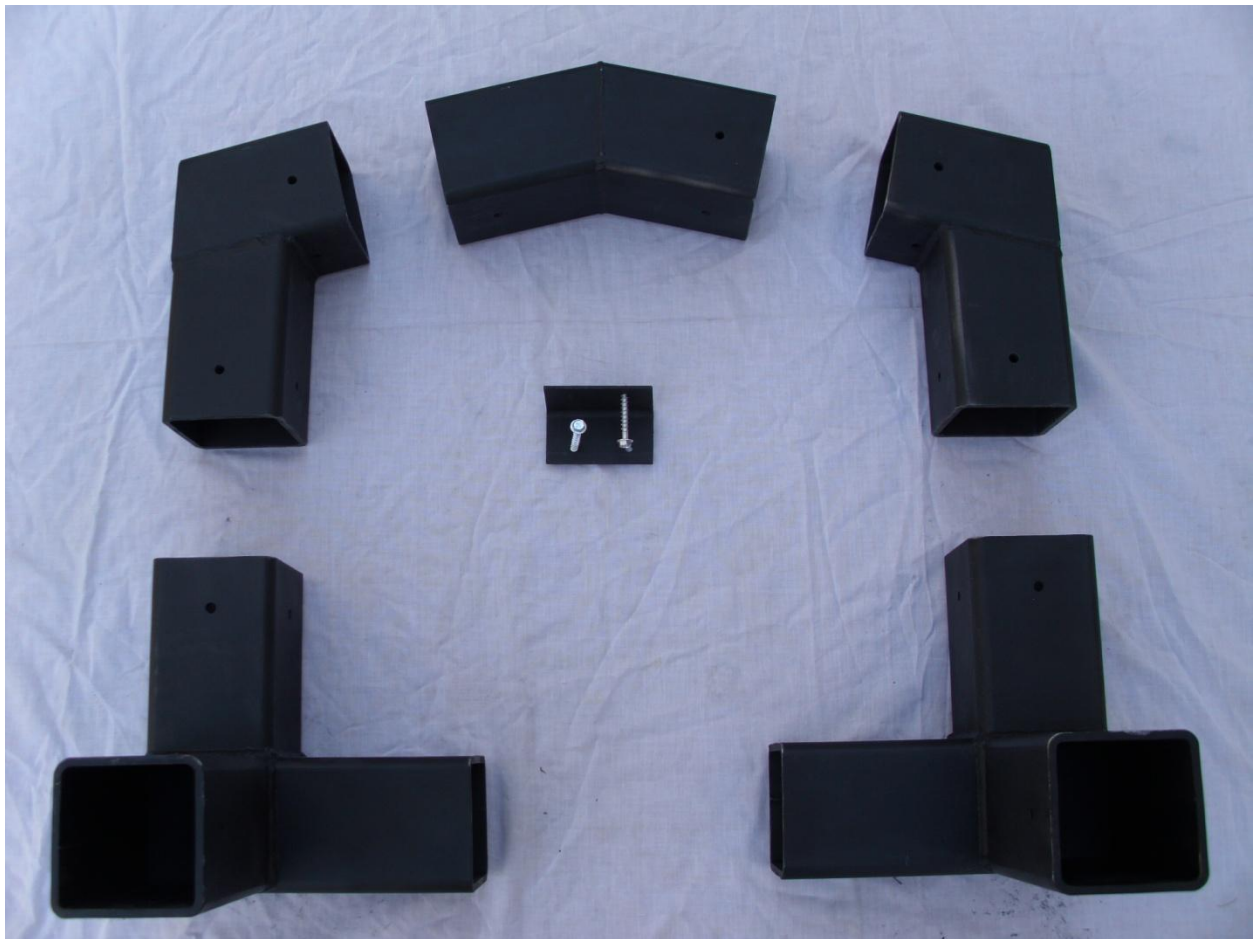
**1 EACH PEAK CONNECTOR**

**TOTAL PRICE PER HOOP**

**SERIES BB-44**

**\$195.30**

**3 ½" H/D Clips \$2.00 each. 1 ½' lag bolts \$.35 cents each = 4 holes per clip. All connectors come with appropriate sized holes. 1"x 5" grade 8 thru & thru bolt with locking nut \$5.90 each ½"x 5" grade 8 thru & thru bolts with locking nut \$2.00 each to secure timber to base connector - ½" x 5 ½" anchor bolts \$1.95 each for concrete application . Hole placement may change from time to time due to engineering requirements.**



**PART NUMBERS FOR THE 3/12 & 8/12 PITCHED ROOF LINES -  
BB-44-EWP-312PITCH - BB-44-EWP-812PITCH**



**INSIDE HOOP KIT CONNECTOR PRICES 4 PORTABLE APP W/FLOOR STRUTS – 3/12 or 8/12 ROOF PITCH**

**2 EACH BOTTOM INSIDE CONNECTORS**

**2 EACH HIP CONNECTORS**

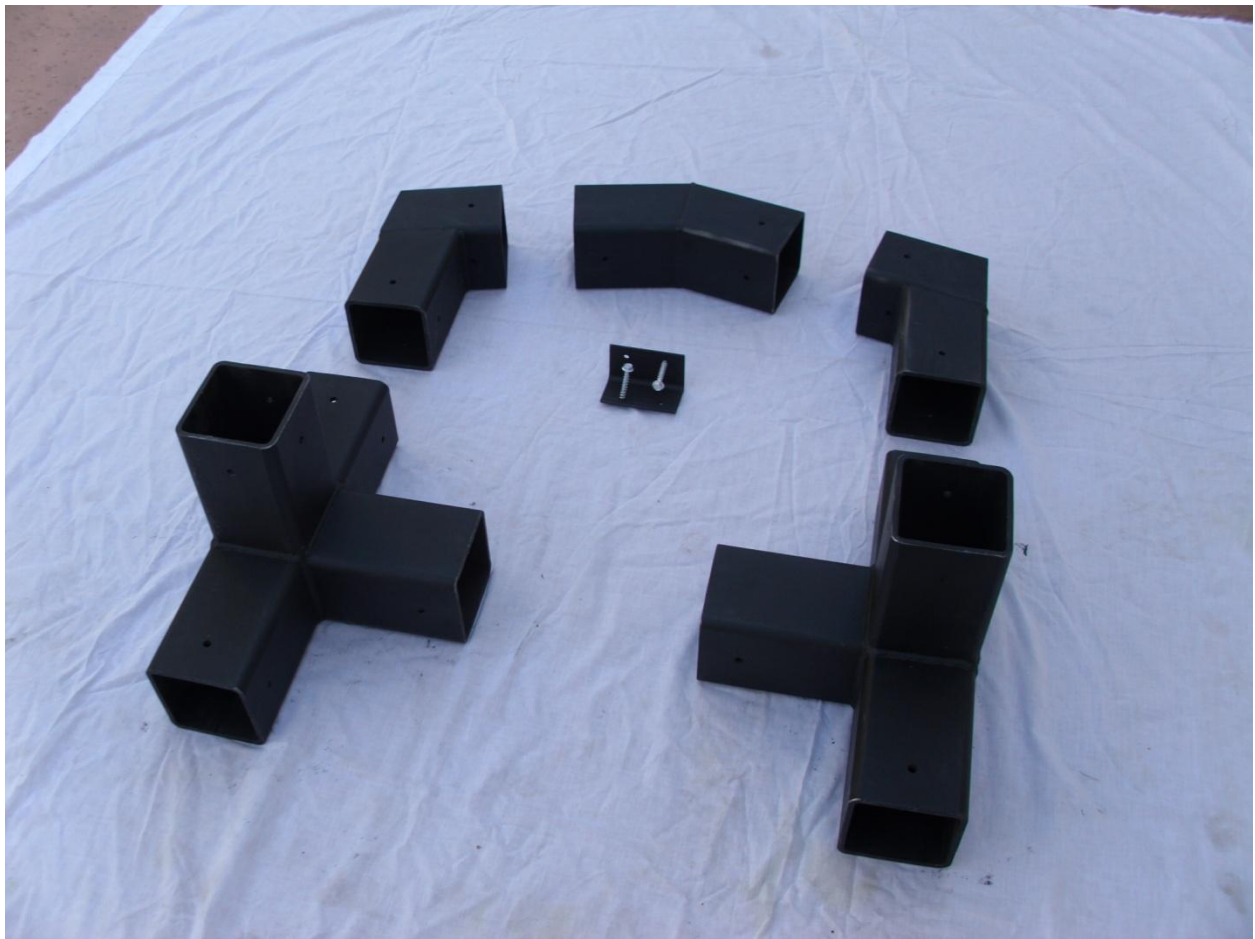
**1 EACH PEAK CONNECTORS**

**TOTAL PRICE PER HOOP**

**SERIES BB-44**

**\$212.70**

3 ½" H/D Clips \$2.00 each. 1 ½' lag bolts \$.35 cents each = 4 holes per clip. All connectors come with appropriate sized holes. 1"x 5" grade 8 thru & thru bolt with locking nut \$5.90 each ½"x 5" grade 8 thru & thru bolts with locking nut \$2.00 each to secure timber to base connector - ½" x 5 ½" anchor bolts \$1.95 each for concrete application . Hole placement may change from time to time due to engineering requirements.



**PART NUMBERS FOR THE 3/12 & 8/12 PITCHED ROOF LINES -  
BB-44-IWP-312PITCH - BB-44-IWP-812PITCH**

**BARN ROOF LINE – CONCRETE APPLICATION - PER HOOP KIT PRICING – LESS WOOD**

1 EACH PEAK CONNECTOR

2 EACH HIP CONNECTOR

2 EACH HI- HIP CONNECTOR

2 EACH CONCRETE BASE CONNECTOR

TOTAL PRICE PER HOOP KIT

**SERIES BB-44**

**\$220.50**

3 ½" H/D Clips \$2.00 each. 1 ½' lag bolts \$.35 cents each = 4 holes per clip. All connectors come with appropriate sized holes. 1"x 5" grade 8 thru & thru bolt with locking nut \$5.90 each ½"x 5" grade 8 thru & thru bolts with locking nut \$2.00 each to secure timber to base connector - ½" x 5 ½" anchor bolts \$1.95 each for concrete application . Hole placement may change from time to time due to engineering requirements.

PART NUMBER TO ORDER BIG BOY CONNECTORS FOR CONCRETE APPLICATION =

**BB-44-CON-BARN**

**END WALL CORNER PER HOOP KIT - BARN ROOF LINE - PORTABLE APPLICATION – LESS WOOD**

1 EACH PEAK CONNECTOR

2 EACH HIP CONNECTOR

2 EACH HI-HIP CONNECTOR

2 EACH BOTTOM CORNER CONNECTOR

TOTAL PRICE PER HOOP KIT

**SERIES BB-44**

**\$252.30**

3 ½" H/D Clips \$2.00 each. 1 ½' lag bolts \$.35 cents each = 4 holes per clip. All connectors come with appropriate sized holes. 1"x 5" grade 8 thru & thru bolt with locking nut \$5.90 each ½"x 5" grade 8 thru & thru bolts with locking nut \$2.00 each to secure timber to base connector - ½" x 5 ½" anchor bolts \$1.95 each for concrete application . Hole placement may change from time to time due to engineering requirements.

PART NUMBER TO ORDER BIG BOY CONNECTORS FOR PORTABLE APPLICATION =

**BB-44-EW-BARN**

**INSIDE WALL CONNECTOR PER HOOP KIT - BARN ROOF LINE - PORTABLE APPLICATION – LESS WOOD**

1 EACH PEAK CONNECTOR

2 EACH HIP CONNECTOR

2 EACH HI-HIP CONNECTOR

2 EACH BOTTOM LOWER INSIDE CONNECTOR

TOTAL PRICE PER HOOP KIT

**SERIES BB-44**

**\$276.10**

3 ½" H/D Clips \$2.00 each. 1 ½' lag bolts \$.35 cents each = 4 holes per clip. All connectors come with appropriate sized holes. 1"x 5" grade 8 thru & thru bolt with locking nut \$5.90 each ½"x 5" grade 8 thru & thru bolts with locking nut \$2.00 each to secure timber to base connector - ½" x 5 ½" anchor bolts \$1.95 each for concrete application . Hole placement may change from time to time due to engineering requirements.

PART NUMBER TO ORDER BIG BOY CONNECTORS FOR PORTABLE APPLICATION =

**BB-44-IW-BARN**

## ASSF SERIES BB-44 CONNECTORS

### BIG BOY – BB-44-SERIES - CONNECTOR ORDER FORM & PRICE LIST - PH # 480 343 9571

BIG BOY STEEL/TIMBER FRMAING CONNECTORS SOLD IN PER HOOP PACKAGES. UD32713

BB-44 SERIES CONNECTORS ARE WELDED OUT OF 4" X 4" X 1/4" WALL HEAVY DUTY STRUCTURAL BOX TUBING.

<u>Hoops Prices</u>	<u>ADD 4 Clips, Lags &amp; Bolts</u>	<u>/</u>	<u># Hoops Ordered</u>	<u>=</u>	<u>\$ Total Amount</u>
<u>PART # BB-44-CON-312 PITCH</u> - W/O \$163.50 EA + _____		= _____		= _____	
<u>PART # BB-44-CON-812 PITCH</u> - W/O \$163.50 EA + _____		= _____		= _____	
<u>PART # BB-44-EWP-312 PITCH</u> - W/O \$195.30 EA + _____		= _____		= _____	
<u>PART # BB-44-EWP-812-PITCH</u> - W/O \$195.30 EA + _____		= _____		= _____	
<u>PART # BB-44-IWP-312 PITCH</u> - W/O \$212.70 EA + _____		= _____		= _____	
<u>PART # BB-44-IWP-812 PITCH</u> - W/O \$212.70 EA + _____		= _____		= _____	
<u>PART # BB-44-CON-BARN</u> - W/O \$220.50 EA + _____		= _____		= _____	
<u>PART # BB-44-EW-BARN</u> - W/O \$252.30 + _____		= _____		= _____	
<u>PART # BB-44-IW-BARN</u> - W/O \$276.10 + _____		= _____		= _____	

### FASTENER HARDWARE FOR INSTALLATION BELOW

H/D STEEL CLIPS 3 ½" X 2" 4 HOLE \$2.00 EACH	NUMBER ORDERED _____ X 2.00 = _____
2" X ¼" LAG BOLTS FOR CLIPS – ORDER 4 PER CLIP	NUMBER ORDERED _____ X .35 = _____
1" X 5" THRU & THRU GRADE 8 BOLT & LOCK NUT	NUMBER ORDERED _____ X 5.90 EA = _____
½" X 5" THRU & THRU GRADE 8 BOLT & LOCK NUT	NUMBER ORDERED _____ X 2.00 EA= _____
½" X 5 ½" EXPANSION ANCHOL BOLTS FOR CONCRET APPLICATION # ORDERED _____	X 1.95 EA= _____
TOTAL AMOUNT OF ORDER FOR OUT OF STATE NO TAX CHARGED	= _____
ARIZOMA RESIDENTS ADD 9.3% TAX TO PURCHASE PRICE	= _____
AMOUNT OF ORDER W/ TAX	\$ _____
ADD FOR FREIGHT OR DELIVER CHARGES – FOB PHOENIX AZ	\$ _____
TOTAL AMOUNT ENCLOSED	\$ _____

TYPICAL FRAME SCHEDULE - 3:12 ROOF SLOPE						
ROOF LOADING	FRAME WIDTH	FRAME BEAM	FRAME SPACING	ROOF PURLINS	FLOOR PURLINS	ALT. FLOOR PURLINS
20 PSF LIVE LOAD/ 10 PSF DEAD LOAD	12 FT.	4x4	10 FT.	2x6 AT 24" o.c.	2x4 AT 8" o.c.	4x4 AT 16" o.c.
	18 FT.	DOUBLE 4x4	10 FT.	2x6 AT 24" o.c.	2x4 AT 8" o.c.	4x4 AT 16" o.c.
	24 FT.	DOUBLE 4x4	8 FT.	2x4 AT 24" o.c.	2x4 AT 12" o.c.	4x4 AT 24" o.c.
20 PSF LIVE LOAD/ 20 PSF DEAD LOAD	12 FT.	4x4	6 FT.	2x4 AT 24" o.c.	2x4 AT 24" o.c.	————
	18 FT.	DOUBLE 4x4	8 FT.	2x6 AT 24" o.c.	2x4 AT 12" o.c.	4x4 AT 24" o.c.
	24 FT.	DOUBLE 4x4	6 FT.	2x4 AT 24" o.c.	2x4 AT 24" o.c.	————
40 PSF SNOW LOAD/ 10 PSF DEAD LOAD	12 FT.	4x4	5 FT.	2x4 AT 24" o.c.	2x4 AT 24" o.c.	————
	18 FT.	DOUBLE 4x4	5 FT.	2x4 AT 24" o.c.	2x4 AT 24" o.c.	————
	24 FT.	DOUBLE 4x4	4 FT.	2x4 AT 24" o.c.	2x4 AT 24" o.c.	————

TYPICAL FRAME SCHEDULE - 8:12 ROOF SLOPE						
ROOF LOADING	FRAME WIDTH	FRAME BEAM	FRAME SPACING	ROOF PURLINS	FLOOR PURLINS	ALT. FLOOR PURLINS
20 PSF LIVE LOAD/ 10 PSF DEAD LOAD	12 FT.	DOUBLE 4x4	12 FT.	2x6 AT 16" o.c.	2x4 AT 8" o.c.	4x4 AT 12" o.c.
	18 FT.	DOUBLE 4x4	10 FT.	2x6 AT 24" o.c.	2x4 AT 8" o.c.	4x4 AT 16" o.c.
	24 FT.	DOUBLE 4x4	6 FT.	2x4 AT 24" o.c.	2x4 AT 24" o.c.	————
20 PSF LIVE LOAD/ 20 PSF DEAD LOAD	12 FT.	4x4	4 FT.	2x4 AT 24" o.c.	2x4 AT 24" o.c.	————
	18 FT.	DOUBLE 4x4	8 FT.	2x6 AT 24" o.c.	2x4 AT 12" o.c.	4x4 AT 24" o.c.
	24 FT.	DOUBLE 4x4	4 FT.	2x4 AT 24" o.c.	2x4 AT 24" o.c.	————
40 PSF SNOW LOAD/ 10 PSF DEAD LOAD	12 FT.	4x4	4 FT.	2x4 AT 24" o.c.	2x4 AT 24" o.c.	————
	18 FT.	DOUBLE 4x4	6 FT.	2x4 AT 24" o.c.	2x4 AT 24" o.c.	————
	24 FT.	DOUBLE 4x4	4 FT.	2x4 AT 24" o.c.	2x4 AT 24" o.c.	————

## 5 TYP. FRAME SCHEDULE

NO SCALE



## **BASIC FRAME USING "BIG BOY" BB- 44 SERIES STEEL/TIMBER CONNECTORS**



## **BELOW ARE NEW SIZES OF BIG BOY CONNECTORS BEING OFFERED**

### **ALL NEW CONNECTOR SIZES WORK LIKE THE BB-44 SERIES**

**BIG BOY LOAD BEARING STEEL/TIMBER ENCLOSED CONNECTORS CAN NOW BE ORDERD & MADE WITH 4"X 6" - 4"X 8" - 6"X 6" & 8"X8" X ¼" WALL THICKNESS STEEL BOX TUBE TO ACCOMMODATE LIKE SIZE MILLED TIMBERS. THE NEW BIG BOY CONNECTOR SERIES BEING OFFERED ARE AS FOLLOWS BB-46, BB-48, BB-66 & BB-88 AVAILABLE FOR CONCRETE APPLICATION OR POLE BARN TYPE CONST. FOR CONCRETE APPLICATION HOOPS WILL CONSIST OF 5 PARTS 2 BASE, 2 HIPS & 1 PEAK EACH. FOR POLE BARN CONST HOOPS WILL CONSIST OF UPPERS ONLY OF 2 HIPS & 1 PEAK CONNECTOR. THEY WILL COME WITH ALL APPROPRIATE SIZED ENGINEERED HOLES FOR THRU & THRU BOLTS AND WILL COME WITH A 3/12 OR 8/12 ROOF PITCH ONLY. PLEASE SCROLL DOWN TO SEE THE SIZES AVAILABLE AND A HOOP PLACENMENT & LOAD CHARTS FOR ALL NEW SIZES OF BIG BOY CONNECTORS OR:**

**CALL RON AT 480 343 9571 FOR DETAILS**

**FOR PRICING, HOOP PLACEMENT & LOAD CHARTS SCROLL DOWN TO SEE EACH SIZE DETAILS.**



**ENHANCED FRAME WITH BB-44 WELDED STEEL LOAD BEARING CONNECTORS & HARDWARE**

Configuration of connectors length, size & hole placement may vary due to engineering & production constraints

**ALL SERIES OF BIG BOY CONNECTORS ACCEPT TIMBERS OR LIKE SIZE STEEL**

**“BIG BOY” SERIES STEEL CONNECTORS & TIMBER FRAMES BY ALL STEEL SHED FRAMES**

**SEE BELOW TYPICAL ALL STEEL SHED FRAMES BIG BOY FRAME HOOP SPACING CHARTS FOR ALL SIZES AND SERIES OF BIG BOY CONECTORS.**

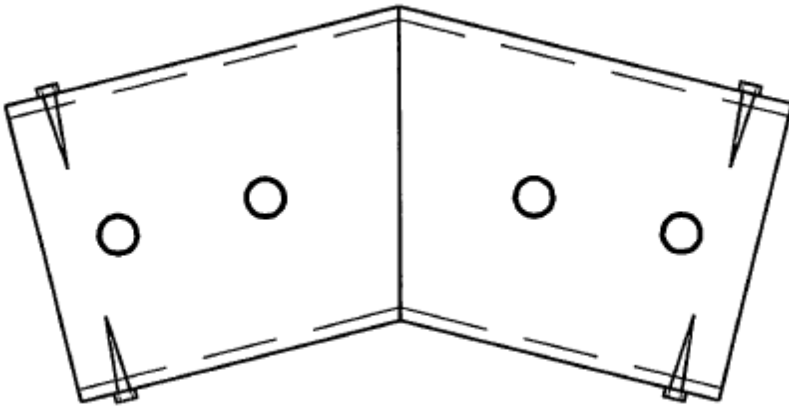
**CHART IS NOT ALL INCLUSIVE AS SOME SPACING IS DICTATED BY LOCAL BLDG CODES.**

**CHART IS A GUIDE IN HELPING YOU TO MAKE AN INFORMED DECISION AS TO HOW MANY HOOPS IT MAY TAKE TO BUILD YOUR PET PROJECT IN YOUR AREA.**

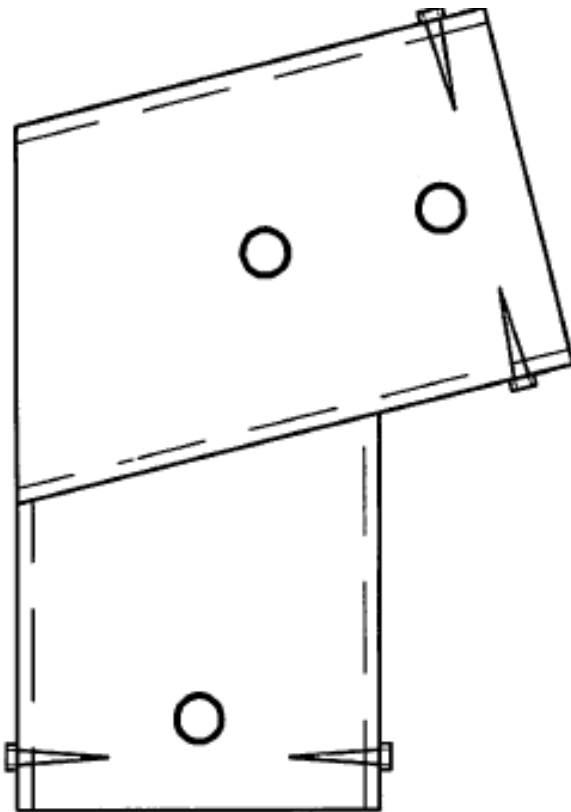
**WE CAN PROVIDE STAMPED DRAWINGS & ENGINEERING FOR YOUR CUSTOM BUILD/PROJECT IN YOUR STATE & COUNTY FOR PERMITTING PURPOSES AT REASONABLE RATES. CALL RON FOR DETAILS AT 480 343 9571**

**TO SEE BASE PLATE DRAWINGS FOR NEW SIZE BIG BOYS SCROLL DOWN TO THE BOTTOM**

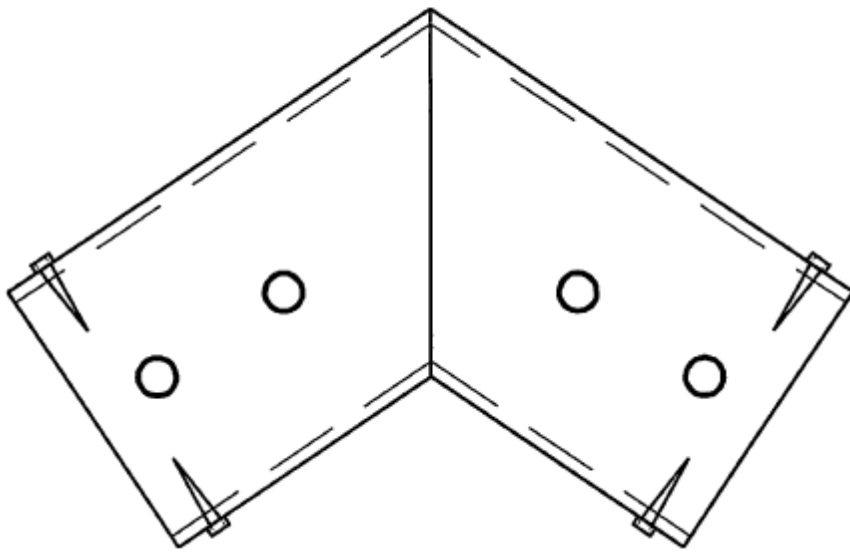
**ASSF SERIES BB-46 BIG BOY CONNECTORS**



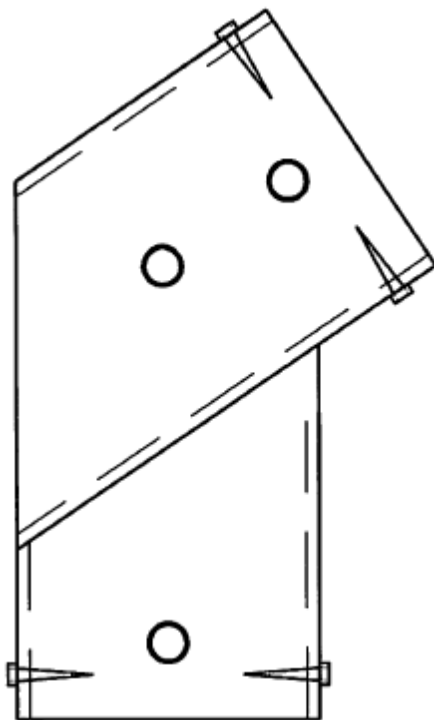
**BB-46-312P** \_\_\_\_\_



**BB-46-312HIP** \_\_\_\_\_



BB-46 - 812P \_\_\_\_\_



BB-46 - 812HIP \_\_\_\_\_

## ASSF SERIES BB-46 CONNECTORS

### BIG BOY – BB-46-SERIES - CONNECTOR ORDER FORM & PRICE LIST - PH # 480 343 9571

BIG BOY STEEL/TIMBER FRMAING CONNECTORS SOLD IN PER HOOP PACKAGES. UD32713

**BB-46 CONNECTORS ARE WELDED OUT OF 4" X 6" X 1/4" WALL HEAVY DUTY STRUCTURAL BOX TUBING.**

Hoops Prices

# Hoops Ordered = \$ Total Amount

FOR CONCRETE APPLICATION INCLUDES (5 PCS) 2 BASE UNITS, 2 HIPS & 1 PEAK

PART # BB-46-CON-312 PITCH - \$ 372.65 + \_\_\_\_\_ = \_\_\_\_\_ = \_\_\_\_\_

PART # BB-46-CON-812 PITCH - \$ 372.65 + \_\_\_\_\_ = \_\_\_\_\_ = \_\_\_\_\_

UPPERS ONLY NO BASES INCLUDES (3 PCS) = 2 HIPS & 1 PEAK FOR BUILDING POLE BARN STYLE BUILDING

PART # BB-46-UPPER-312 PITCH - \$ 216.00 + \_\_\_\_\_ = \_\_\_\_\_ = \_\_\_\_\_

PART # BB-46-UPPER-812-PITCH - \$ 216.00 + \_\_\_\_\_ = \_\_\_\_\_ = \_\_\_\_\_

### FASTENER HARDWARE FOR INSTALLATION OF SERIES BB- 46 BELOW

H/D STEEL CLIPS 5 1/2" X 2X2-1/8" THICK - 4 HOLE \$3.95 EACH NUMBER ORDERED \_\_\_\_\_ X 3.95 = \_\_\_\_\_

H/D STEEL CLIPS 3"x3"x5 1/2"x 1/4"THICK 4 HOLE \$7.95 EACH NUMER ORDERED \_\_\_\_\_ X6.95 = \_\_\_\_\_

2" X 1/4" LAG BOLTS FOR CLIPS – ORDER 4 PER CLIP NUMBER ORDERED \_\_\_\_\_ X .35 = \_\_\_\_\_

1" X 5" THRU & THRU GRADE 8 BOLT & LOCK NUT NUMBER ORDERED \_\_\_\_\_ X 5.90 EA = \_\_\_\_\_

1/2" X 5" THRU & THRU GRADE 8 BOLT & LOCK NUT NUMBER ORDERED \_\_\_\_\_ X 2.00 EA= \_\_\_\_\_

1/2" X 5 1/2" EXPANSION ANCHOL BOLTS FOR CONCRET APPLICATION # ORDERED \_\_\_\_\_ X 1.95 EA= \_\_\_\_\_

TOTAL AMOUNT OF ORDER FOR OUT OF STATE NO TAX CHARGED = \_\_\_\_\_

ARIZOMA RESIDENTS ADD 9.3% TAX TO PURCHASE PRICE = \_\_\_\_\_

AMOUNT OF ORDER W/ TAX \$ \_\_\_\_\_

ADD FOR FREIGHT OR DELIVER CHARGES – FOB PHOENIX AZ \$ \_\_\_\_\_

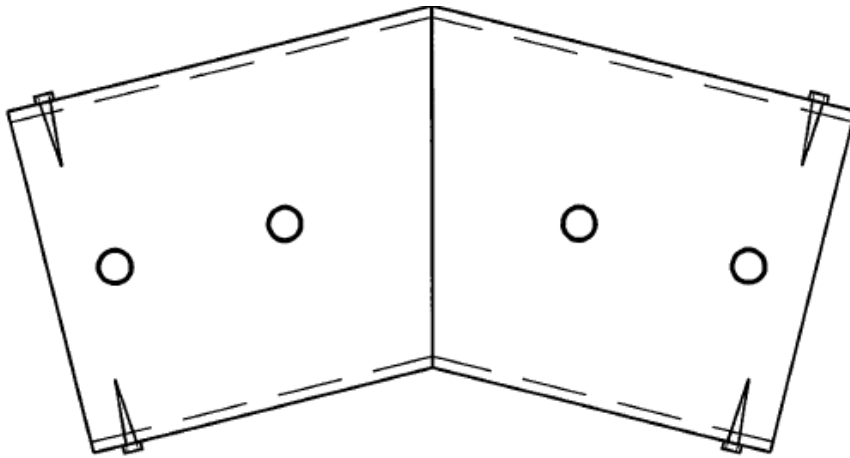
TOTAL AMOUNT ENCLOSED \$ \_\_\_\_\_



4x6 FRAME SCHEDULE - 3:12 ROOF SLOPE						
ROOF LOADING	FRAME WIDTH	FRAME BEAM	FRAME SPACING	ROOF PURLINS	FLOOR PURLINS	ALT. FLOOR PURLINS
20 PSF LIVE LOAD/ 10 PSF DEAD LOAD	12 FT.	4x6	10 FT.	2x6 AT 16" o.c.	2x6 AT 8" o.c.	————
	18 FT.	4x6	6 FT.	2x4 AT 24" o.c.	2x4 AT 16" o.c.	4x4 AT 24" o.c.
	24 FT.	4x6 & 4x4	6 FT.	2x4 AT 24" o.c.	2x4 AT 16" o.c.	4x4 AT 24" o.c.
20 PSF LIVE LOAD/ 20 PSF DEAD LOAD	12 FT.	4x6	8 FT.	2x6 AT 16" o.c.	2x6 AT 8" o.c.	————
	18 FT.	4x6	4 FT.	2x4 AT 24" o.c.	2x4 AT 24" o.c.	4x4 AT 24" o.c.
	24 FT.	4x6 & 4x4	4 FT.	2x4 AT 24" o.c.	2x4 AT 24" o.c.	4x4 AT 24" o.c.
40 PSF SNOW LOAD/ 10 PSF DEAD LOAD	12 FT.	4x6	8 FT.	2x6 AT 8" o.c.	2x6 AT 8" o.c.	————
	18 FT.	4x6	4 FT.	2x4 AT 24" o.c.	2x4 AT 24" o.c.	4x4 AT 24" o.c.
	24 FT.	4x6 & 4x4	4 FT.	2x4 AT 24" o.c.	2x4 AT 24" o.c.	4x4 AT 24" o.c.

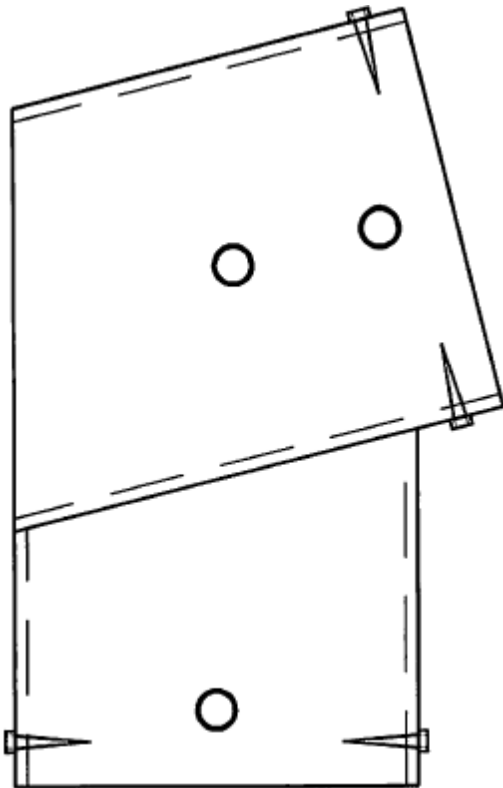
4x6 FRAME SCHEDULE - 8:12 ROOF SLOPE						
ROOF LOADING	FRAME WIDTH	FRAME BEAM	FRAME SPACING	ROOF PURLINS	FLOOR PURLINS	ALT. FLOOR PURLINS
20 PSF LIVE LOAD/ 10 PSF DEAD LOAD	12 FT.	4x6	12 FT.	2x6 AT 16" o.c.	2x6 AT 8" o.c.	————
	18 FT.	4x6	6 FT.	2x6 AT 24" o.c.	2x4 AT 16" o.c.	4x4 AT 24" o.c.
	24 FT.	4x6 & 4x4	4 FT.	2x4 AT 24" o.c.	2x4 AT 24" o.c.	————
20 PSF LIVE LOAD/ 20 PSF DEAD LOAD	12 FT.	4x6	12 FT.	2x6 AT 16" o.c.	2x6 AT 8" o.c.	————
	18 FT.	4x6 & 4x4	6 FT.	2x4 AT 24" o.c.	2x4 AT 16" o.c.	4x4 AT 24" o.c.
	24 FT.	4x6 & 4x4	4 FT.	2x4 AT 24" o.c.	2x4 AT 24" o.c.	————
40 PSF SNOW LOAD/ 10 PSF DEAD LOAD	12 FT.	4x6	12 FT.	2x6 AT 8" o.c.	2x6 AT 8" o.c.	————
	18 FT.	4x6 & 4x4	6 FT.	2x4 AT 16" o.c.	2x4 AT 16" o.c.	4x4 AT 24" o.c.
	24 FT.	4x6 & 4x6	4 FT.	2x4 AT 24" o.c.	2x4 AT 24" o.c.	————

ASSF SERIES BB-48 BIG BOY CONNECTORS



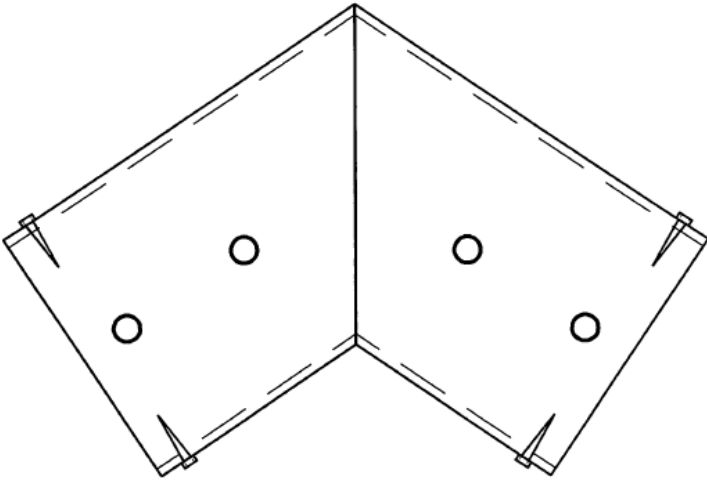
BB-48 - 312P

---



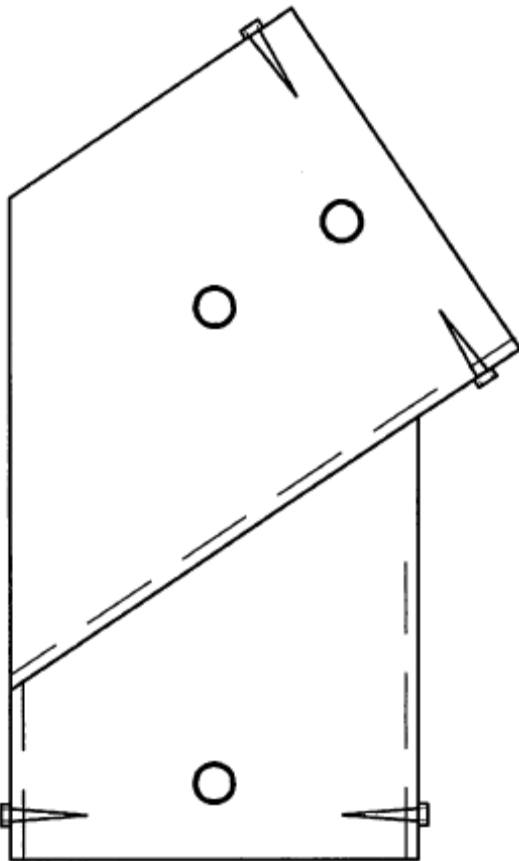
BB-48- 312HIP

---



BB-48-812P

---



BB-48 - 812HIP

---

## ASSF SERIES BB-48 CONNECTORS

### BIG BOY – BB-48-SERIES - CONNECTOR ORDER FORM & PRICE LIST - PH # 480 343 9571

BIG BOY STEEL/TIMBER FRMAING CONNECTORS SOLD IN PER HOOP PACKAGES. UD32713

**BB-48 CONNECTORS ARE WELDED OUT OF 4" X 8" X 1/4" WALL HEAVY DUTY STRUCTURAL BOX TUBING.**

#### Hoops Prices

# Hoops Ordered = \$ Total Amount

FOR CONCRETE APPLICATION INCLUDES (5 PCS) 2 BASE UNITS, 2 HIPS & 1 PEAK

PART # BB-48-CON-312 PITCH - \$ 423.80 + \_\_\_\_\_ = \_\_\_\_\_ = \_\_\_\_\_

PART # BB-48-CON-812 PITCH - \$ 423.80 + \_\_\_\_\_ = \_\_\_\_\_ = \_\_\_\_\_

UPPERS ONLY NO BASES INCLUDES (3 PCS) = 2 HIPS & 1 PEAK FOR BUILDING POLE BARN STYLE BUILDING

PART # BB-48-UPPER-312 PITCH - \$ 260.40 + \_\_\_\_\_ = \_\_\_\_\_ = \_\_\_\_\_

PART # BB-48-UPPER-812-PITCH - \$ 260.40 + \_\_\_\_\_ = \_\_\_\_\_ = \_\_\_\_\_

### FASTENER HARDWARE FOR INSTALLATION OF SERIES BB-48 BELOW

H/D STEEL CLIPS 7 1/2" X 2"X2"X 1/8"- 4 HOLE \$5.95 EACH NUMBER ORDERED \_\_\_\_\_ X 5.95 = \_\_\_\_\_

H/D STEEL CLIPS 3X3X7 1/2"X 1/4"THICK- 4 HOLE \$7.95 EACH NUMER ORDERED \_\_\_\_\_ X7.95 = \_\_\_\_\_

2" X 1/4" LAG BOLTS FOR CLIPS – ORDER 4 PER CLIP NUMBER ORDERED \_\_\_\_\_ X .35 = \_\_\_\_\_

1" X 5" THRU & THRU GRADE 8 BOLT & LOCK NUT NUMBER ORDERED \_\_\_\_\_ X 5.90 EA = \_\_\_\_\_

1/2" X 5" THRU & THRU GRADE 8 BOLT & LOCK NUT NUMBER ORDERED \_\_\_\_\_ X 2.00 EA= \_\_\_\_\_

1/2" X 5 1/2" EXPANSION ANCHOL BOLTS FOR CONCRET APPLICATION # ORDERED \_\_\_\_\_ X 1.95 EA= \_\_\_\_\_

TOTAL AMOUNT OF ORDER FOR OUT OF STATE NO TAX CHARGED = \_\_\_\_\_

ARIZOMA RESIDENTS ADD 9.3% TAX TO PURCHASE PRICE = \_\_\_\_\_

AMOUNT OF ORDER W/ TAX \$ \_\_\_\_\_

ADD FOR FREIGHT OR DELIVER CHARGES – FOB PHOENIX AZ \$ \_\_\_\_\_

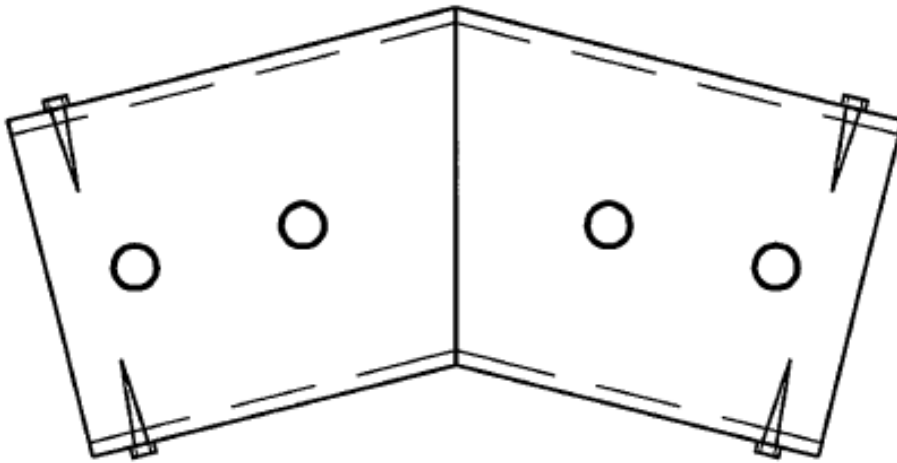
TOTAL AMOUNT ENCLOSED \$ \_\_\_\_\_

4x8 FRAME SCHEDULE - 3:12 ROOF SLOPE						
ROOF LOADING	FRAME WIDTH	FRAME BEAM	FRAME SPACING	ROOF PURLINS	FLOOR PURLINS	ALT. FLOOR PURLINS
20 PSF LIVE LOAD/ 10 PSF DEAD LOAD	12 FT.	4x8	12 FT.	2x6 AT 16" o.c.	2x6 AT 8" o.c.	————
	18 FT.	4x8	10 FT.	2x6 AT 16" o.c.	2x6 AT 8" o.c.	
	24 FT.	4x8 & 4x4	8 FT.	2x4 AT 24" o.c.	2x4 AT 12" o.c.	4x4 AT 24" o.c.
20 PSF LIVE LOAD/ 20 PSF DEAD LOAD	12 FT.	4x8	12 FT.	2x6 AT 16" o.c.	2x6 AT 8" o.c.	————
	18 FT.	4x8	8 FT.	2x6 AT 24" o.c.	2x4 AT 8" o.c.	4x4 AT 16" o.c.
	24 FT.	4x8 & 4x4	6 FT.	2x4 AT 24" o.c.	2x4 AT 24" o.c.	————
40 PSF SNOW LOAD/ 10 PSF DEAD LOAD	12 FT.	4x8	10 FT.	2x6 AT 8" o.c.	2x6 AT 8" o.c.	————
	18 FT.	4x8	6 FT.	2x4 AT 16" o.c.	2x4 AT 16" o.c.	————
	24 FT.	4x8 & 4x4	4 FT.	2x4 AT 24" o.c.	2x4 AT 24" o.c.	————

4x8 FRAME SCHEDULE - 8:12 ROOF SLOPE						
ROOF LOADING	FRAME WIDTH	FRAME BEAM	FRAME SPACING	ROOF PURLINS	FLOOR PURLINS	ALT. FLOOR PURLINS
20 PSF LIVE LOAD/ 10 PSF DEAD LOAD	12 FT.	4x8	12 FT.	2x6 AT 16" o.c.	2x6 AT 8" o.c.	————
	18 FT.	4x8	8 FT.	2x4 AT 24" o.c.	2x4 AT 12" o.c.	4x4 AT 24" o.c.
	24 FT.	4x8 & 4x4	6 FT.	2x6 AT 24" o.c.	2x4 AT 16" o.c.	4x4 AT 24" o.c.
20 PSF LIVE LOAD/ 20 PSF DEAD LOAD	12 FT.	4x8	12 FT.	2x6 AT 16" o.c.	2x6 AT 8" o.c.	————
	18 FT.	4x8	6 FT.	2x4 AT 24" o.c.	2x4 AT 24" o.c.	————
	24 FT.	4x8 & 4x4	4 FT.	2x4 AT 24" o.c.	2x4 AT 24" o.c.	————
40 PSF SNOW LOAD/ 10 PSF DEAD LOAD	12 FT.	4x8	12 FT.	2x6 AT 8" o.c.	2x6 AT 8" o.c.	————
	18 FT.	4x8	4 FT.	2x4 AT 24" o.c.	2x4 AT 24" o.c.	————
	24 FT.	4x8 & 4x4	4 FT.	2x4 AT 24" o.c.	2x4 AT 24" o.c.	————

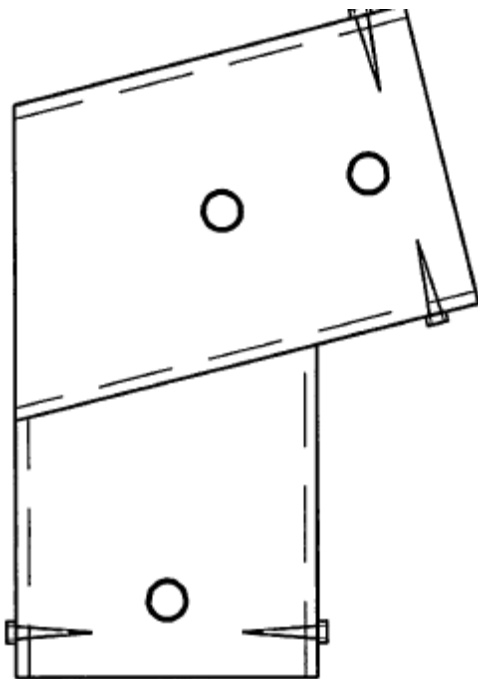


**ASSF SERIES BB-66 BIG BOY CONNECTORS**



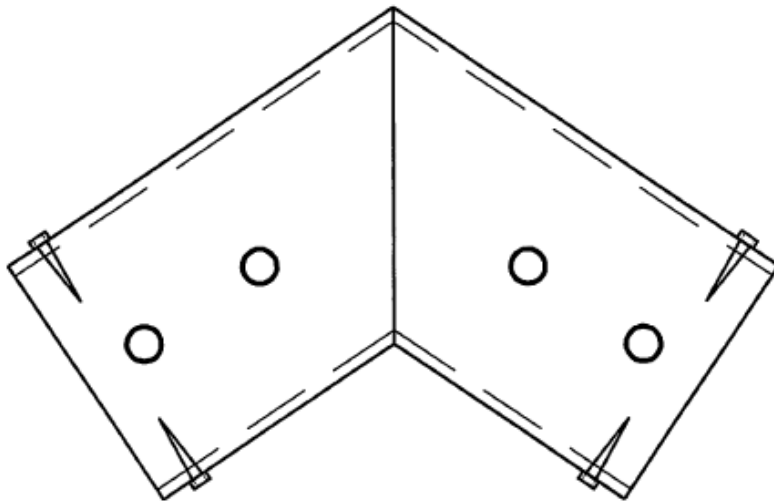
**BB-66 - 312P**

---



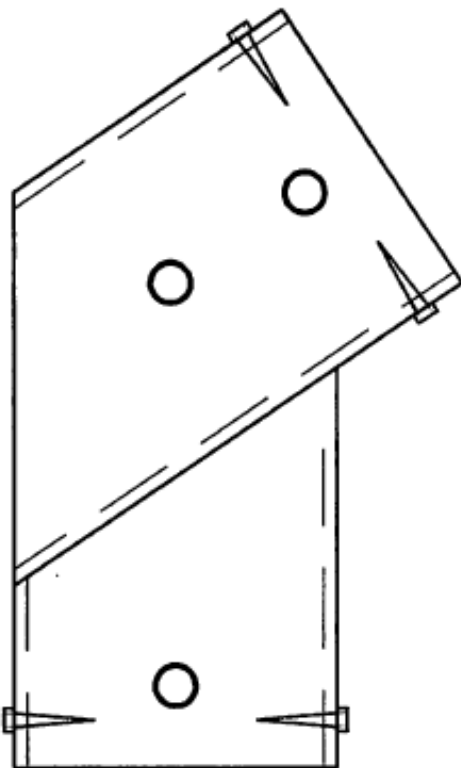
**BB-66-312HIP**

---



BB-66 - 812P

---



BB-66 - 812HIP

---

## ASSF SERIES BB-66 SERIES CONNECTORS

### BIG BOY – BB-66-SERIES - CONNECTOR ORDER FORM & PRICE LIST - PH # 480 343 9571

BIG BOY STEEL/TIMBER FRMAING CONNECTORS SOLD IN PER HOOP PACKAGES. UD32713

**BB-66 CONNECTORS ARE WELDED OUT OF 6" X 6" X 1/4" WALL HEAVY DUTY STRUCTURAL BOX TUBING.**

Hoops Prices

# Hoops Ordered = \$ Total Amount

FOR CONCRETE APPLICATION INCLUDES (5 PCS) 2 BASE UNITS, 2 HIPS & 1 PEAK

PART # BB-66-CON-312 PITCH - \$ 449.20 + \_\_\_\_\_ = \_\_\_\_\_ = \_\_\_\_\_

PART # BB-66-CON-812 PITCH - \$ 449.20 + \_\_\_\_\_ = \_\_\_\_\_ = \_\_\_\_\_

UPPERS ONLY NO BASES INCLUDES (3 PCS) = 2 HIPS & 1 PEAK FOR BUILDING POLE BARN STYLE BUILDING

PART # BB-66-UPPER-312 PITCH - \$ 273.60 + \_\_\_\_\_ = \_\_\_\_\_ = \_\_\_\_\_

PART # BB-66-UPPER-812-PITCH - \$ 273.60 + \_\_\_\_\_ = \_\_\_\_\_ = \_\_\_\_\_

### FASTENER HARDWARE FOR INSTALLATION OF SERIES BB-66 BELOW

H/D STEEL CLIPS 5 1/2" X 2X2-1/8" THICK - 4 HOLE \$3.95 EACH NUMBER ORDERED \_\_\_\_\_ X 3.95 = \_\_\_\_\_

H/D STEEL CLIPS 3"X3"X5 1/2"X 1/4"THICK 4 HOLE \$7.95 EACH NUMER ORDERED \_\_\_\_\_ X7.95 = \_\_\_\_\_

2" X 1/4" LAG BOLTS FOR CLIPS – ORDER 4 PER CLIP NUMBER ORDERED \_\_\_\_\_ X .35 = \_\_\_\_\_

1" X 7" THRU & THRU GRADE 8 BOLT & LOCK NUT NUMBER ORDERED \_\_\_\_\_ X 8.10 = \_\_\_\_\_

1/2" X 7" THRU & THRU GRADE 8 BOLT & LOCK NUT NUMBER ORDERED \_\_\_\_\_ X 1.95 = \_\_\_\_\_

1/2" X 5 1/2" EXPANSION ANCHOL BOLTS FOR CONCRET APPLICATION # ORDERED \_\_\_\_\_ X 1.95 EA= \_\_\_\_\_

TOTAL AMOUNT OF ORDER FOR OUT OF STATE NO TAX CHARGED = \_\_\_\_\_

ARIZOMA RESIDENTS ADD 9.3% TAX TO PURCHASE PRICE = \_\_\_\_\_

AMOUNT OF ORDER W/ TAX \$ \_\_\_\_\_

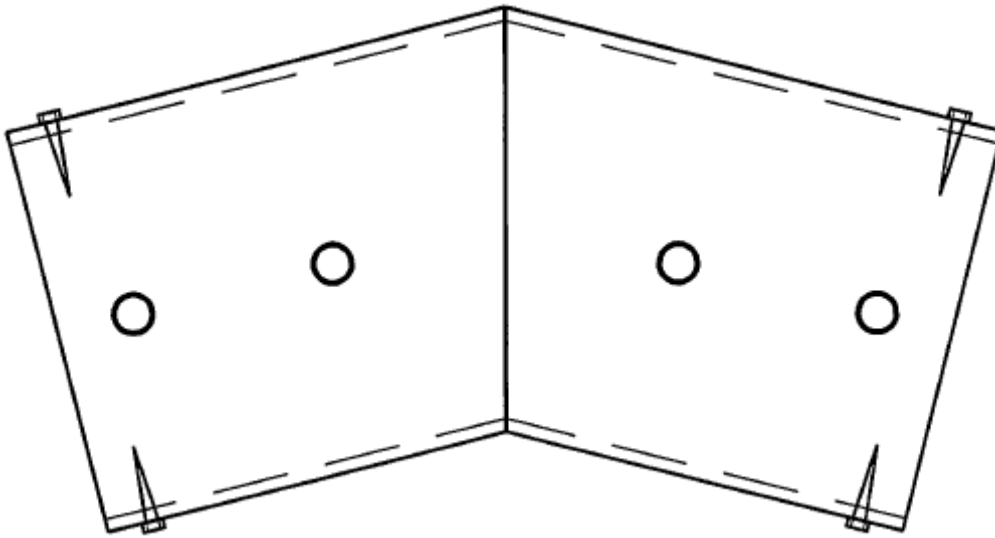
ADD FOR FREIGHT OR DELIVER CHARGES – FOB PHOENIX AZ \$ \_\_\_\_\_

TOTAL AMOUNT ENCLOSED \$ \_\_\_\_\_

6x6 FRAME SCHEDULE - 3:12 ROOF SLOPE						
ROOF LOADING	FRAME WIDTH	FRAME BEAM	FRAME SPACING	ROOF PURLINS	FLOOR PURLINS	ALT. FLOOR PURLINS
20 PSF LIVE LOAD/ 10 PSF DEAD LOAD	12 FT.	6x6	12 FT.	2x6 AT 16" o.c.	2x6 AT 8" o.c.	_____
	18 FT.	6x6	12 FT.	2x6 AT 16" o.c.	2x6 AT 8" o.c.	_____
	24 FT.	6x6	6 FT.	2x6 AT 24" o.c.	2x4 AT 16" o.c.	4x4 AT 24" o.c.
20 PSF LIVE LOAD/ 20 PSF DEAD LOAD	12 FT.	6x6	12 FT.	2x6 AT 16" o.c.	2x6 AT 8" o.c.	_____
	18 FT.	6x6	10 FT.	2x6 AT 16" o.c.	2x6 AT 8" o.c.	_____
	24 FT.	6x6	4 FT.	2x4 AT 24" o.c.	2x4 AT 24" o.c.	_____
40 PSF SNOW LOAD/ 10 PSF DEAD LOAD	12 FT.	6x6	12 FT.	2x6 AT 8" o.c.	2x6 AT 8" o.c.	_____
	18 FT.	6x6	8 FT.	2x6 AT 8" o.c.	2x6 AT 8" o.c.	_____
	24 FT.	6x6	4 FT.	2x4 AT 24" o.c.	2x4 AT 24" o.c.	_____

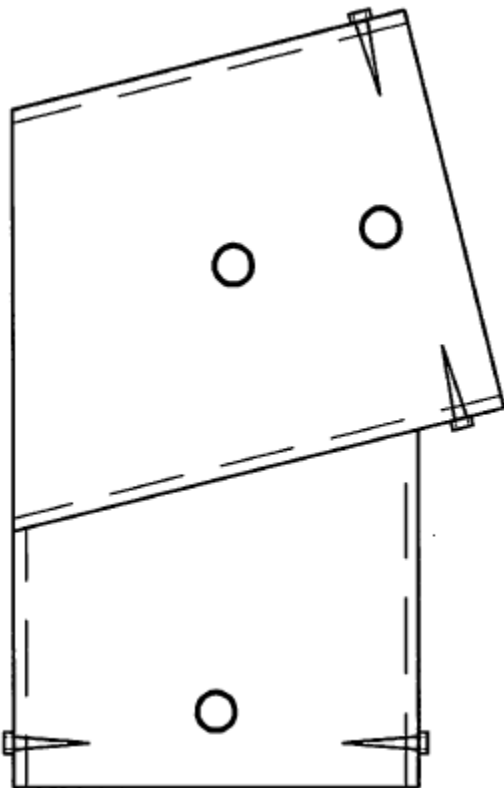
6x6 FRAME SCHEDULE - 8:12 ROOF SLOPE						
ROOF LOADING	FRAME WIDTH	FRAME BEAM	FRAME SPACING	ROOF PURLINS	FLOOR PURLINS	ALT. FLOOR PURLINS
20 PSF LIVE LOAD/ 10 PSF DEAD LOAD	12 FT.	6x6	12 FT.	2x6 AT 16" o.c.	2x6 AT 8" o.c.	_____
	18 FT.	6x6	10 FT.	2x6 AT 16" o.c.	2x6 AT 8" o.c.	_____
	24 FT.	6x6	6 FT.	2x6 AT 24" o.c.	2x4 AT 16" o.c.	4x4 AT 24" o.c.
20 PSF LIVE LOAD/ 20 PSF DEAD LOAD	12 FT.	6x6	12 FT.	2x6 AT 16" o.c.	2x6 AT 8" o.c.	_____
	18 FT.	6x6	8 FT.	2x6 AT 24" o.c.	2x4 AT 8" o.c.	4x4 AT 16" o.c.
	24 FT.	6x6	4 FT.	2x4 AT 24" o.c.	2x4 AT 24" o.c.	_____
40 PSF SNOW LOAD/ 10 PSF DEAD LOAD	12 FT.	6x6	12 FT.	2x6 AT 8" o.c.	2x6 AT 8" o.c.	_____
	18 FT.	6x6	6 FT.	2x4 AT 16" o.c.	2x4 AT 16" o.c.	_____
	24 FT.	6x6	4 FT.	2x4 AT 24" o.c.	2x4 AT 24" o.c.	_____

**ASSF SERIES BB-88 BIG BOY CONNECTORS**



**BB-88 - 312P**

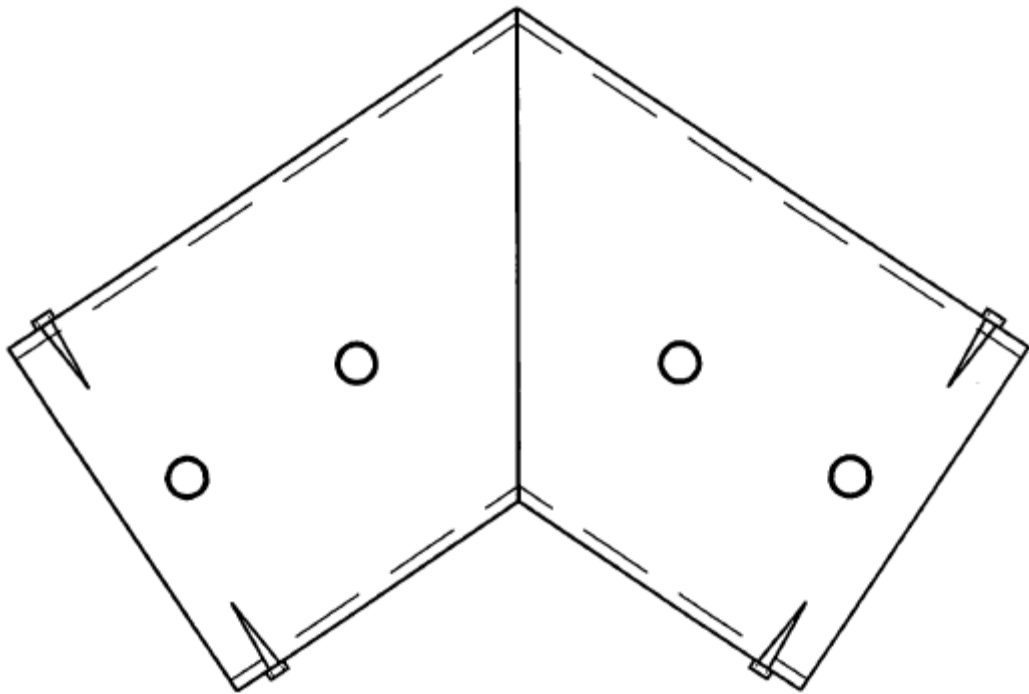
---



**BB-88 - 3/12 HIP**

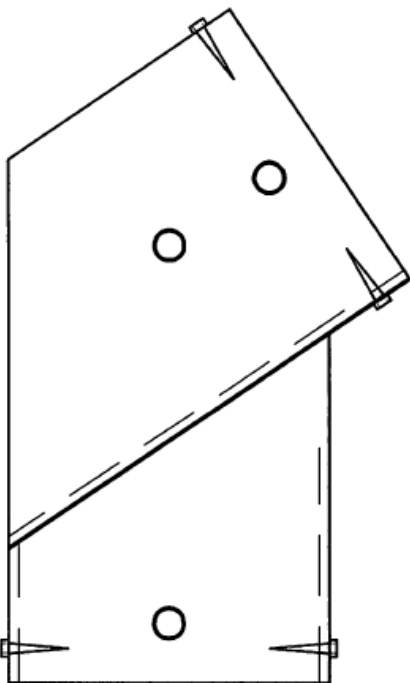
---





BB-88 - 812P

---



BB-88 - 812HIP

---

## ASSF SERIES BB-88 SERIES CONNECTORS

### BIG BOY – BB-88-SERIES - CONNECTOR ORDER FORM & PRICE LIST - PH # 480 343 9571

BIG BOY STEEL/TIMBER FRMAING CONNECTORS SOLD IN PER HOOP PACKAGES. UD32713

**BB-88 CONNECTORS ARE WELDED OUT OF 8" X 8" X 1/4" WALL HEAVY DUTY STRUCTURAL BOX TUBING.**

#### Hoops Prices

# Hoops Ordered = \$ Total Amount

FOR CONCRETE APPLICATION INCLUDES (5 PCS) 2 BASE UNITS, 2 HIPS & 1 PEAK

PART # BB-88-CON-312 PITCH - \$ 592.20 + \_\_\_\_\_ = \_\_\_\_\_ = \_\_\_\_\_

PART # BB-88-CON-812 PITCH - \$ 592.20 + \_\_\_\_\_ = \_\_\_\_\_ = \_\_\_\_\_

UPPERS ONLY NO BASES INCLUDES (3 PCS) = 2 HIPS & 1 PEAK FOR BUILDING POLE BARN STYLE BUILDING

PART # BB-88-UPPER-312 PITCH - \$ 342.40 + \_\_\_\_\_ = \_\_\_\_\_ = \_\_\_\_\_

PART # BB-88-UPPER-812-PITCH - \$ 342.40 + \_\_\_\_\_ = \_\_\_\_\_ = \_\_\_\_\_

### FASTENER HARDWARE FOR INSTALLATION OF SERIES BB-88 BELOW

H/D STEEL CLIPS 7 1/2" X 2"X2"X 1/8"- 4 HOLE \$5.95 EACH NUMBER ORDERED \_\_\_\_\_ X 5.95 = \_\_\_\_\_

H/D STEEL CLIPS 3X3X7 1/2"X 1/4"THICK- 4 HOLE \$7.95 EACH NUMER ORDERED \_\_\_\_\_ X7.95 = \_\_\_\_\_

2" X 1/4" LAG BOLTS FOR CLIPS – ORDER 4 PER CLIP NUMBER ORDERED \_\_\_\_\_ X .35 = \_\_\_\_\_

1" X 9" THRU & THRU GRADE 8 BOLT & LOCK NUT NUMBER ORDERED \_\_\_\_\_ X 9.60 = \_\_\_\_\_

1/2" X 9" THRU & THRU GRADE 8 BOLT & LOCK NUT NUMBER ORDERED \_\_\_\_\_ X2.95= \_\_\_\_\_

1/2" X 5 1/2" EXPANSION ANCHOL BOLTS FOR CONCRET APPLICATION # ORDERED \_\_\_\_\_ X 1.95 EA= \_\_\_\_\_

TOTAL AMOUNT OF ORDER FOR OUT OF STATE NO TAX CHARGED = \_\_\_\_\_

ARIZOMA RESIDENTS ADD 9.3% TAX TO PURCHASE PRICE = \_\_\_\_\_

AMOUNT OF ORDER W/ TAX \$ \_\_\_\_\_

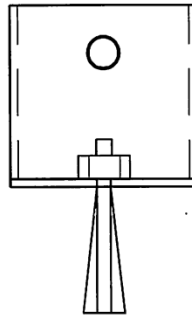
ADD FOR FREIGHT OR DELIVER CHARGES – FOB PHOENIX AZ \$ \_\_\_\_\_

TOTAL AMOUNT ENCLOSED \$ \_\_\_\_\_

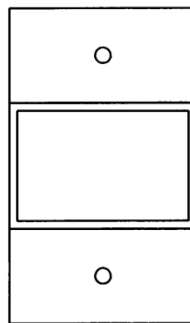
8x8 FRAME SCHEDULE - 3:12 ROOF SLOPE						
ROOF LOADING	FRAME WIDTH	FRAME BEAM	FRAME SPACING	ROOF PURLINS	FLOOR PURLINS	ALT. FLOOR PURLINS
20 PSF LIVE LOAD/ 10 PSF DEAD LOAD	12 FT.	8x8	12 FT.	2x6 AT 16" o.c.	2x6 AT 8" o.c.	_____
	18 FT.	8x8	12 FT.	2x6 AT 16" o.c.	2x6 AT 8" o.c.	_____
	24 FT.	8x8	12 FT.	2x6 AT 16" o.c.	2x6 AT 8" o.c.	_____
20 PSF LIVE LOAD/ 20 PSF DEAD LOAD	12 FT.	8x8	12 FT.	2x6 AT 16" o.c.	2x6 AT 8" o.c.	_____
	18 FT.	8x8	12 FT.	2x6 AT 16" o.c.	2x6 AT 8" o.c.	_____
	24 FT.	8x8	12 FT.	2x6 AT 16" o.c.	2x6 AT 8" o.c.	_____
40 PSF SNOW LOAD/ 10 PSF DEAD LOAD	12 FT.	8x8	12 FT.	2x6 AT 8" o.c.	2x6 AT 8" o.c.	_____
	18 FT.	8x8	12 FT.	2x6 AT 8" o.c.	2x6 AT 8" o.c.	_____
	24 FT.	8x8	12 FT.	2x6 AT 8" o.c.	2x6 AT 8" o.c.	_____

8x8 FRAME SCHEDULE - 8:12 ROOF SLOPE						
ROOF LOADING	FRAME WIDTH	FRAME BEAM	FRAME SPACING	ROOF PURLINS	FLOOR PURLINS	ALT. FLOOR PURLINS
20 PSF LIVE LOAD/ 10 PSF DEAD LOAD	12 FT.	8x8	12 FT.	2x6 AT 16" o.c.	2x6 AT 8" o.c.	_____
	18 FT.	8x8	12 FT.	2x6 AT 16" o.c.	2x6 AT 8" o.c.	_____
	24 FT.	8x8	10 FT.	2x6 AT 16" o.c.	2x6 AT 8" o.c.	_____
20 PSF LIVE LOAD/ 20 PSF DEAD LOAD	12 FT.	8x8	12 FT.	2x6 AT 16" o.c.	2x6 AT 8" o.c.	_____
	18 FT.	8x8	12 FT.	2x6 AT 16" o.c.	2x6 AT 8" o.c.	_____
	24 FT.	8x8	8 FT.	2x6 AT 24" o.c.	2x4 AT 8" o.c.	4x4 AT 16" o.c.
40 PSF SNOW LOAD/ 10 PSF DEAD LOAD	12 FT.	8x8	12 FT.	2x6 AT 8" o.c.	2x6 AT 8" o.c.	_____
	18 FT.	8x8	12 FT.	2x6 AT 8" o.c.	2x6 AT 8" o.c.	_____
	24 FT.	8x8	6 FT.	2x4 AT 16" o.c.	2x4 AT 16" o.c.	_____

**FOLLOWING ARE THE CONFIGURATIONS OF THE BASE PLATE CONNECTORS WITH HOLES FOR  
CONCRETE/ANCHOR APPLICATION OF YOUR CHOSEN SIZE OF TIMBER/CONNECTOR**



ELEVATION



PLAN

**ALL STEEL SHED FRAMES**

PO BOX 30745 PHOENIX, AZ 85046  
CALL: (480) 343-9571  
allsteelshedframes.com

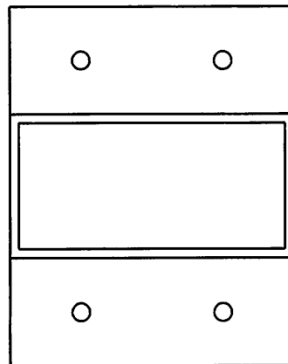
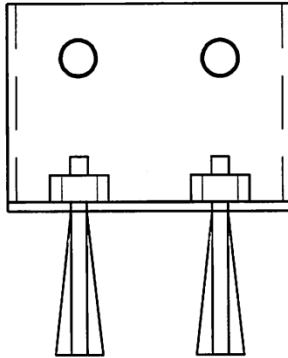
**POST BASE TO CONCRETE**

SCALE: 3" = 1'-0"

PART NO.

11-BB-4x6-Base

03.09.2013



PLAN

**ALL STEEL SHED FRAMES**

PO BOX 30745 PHOENIX, AZ 85046  
CALL: (480) 343-9571  
allsteelshedframes.com

**POST BASE TO CONCRETE**

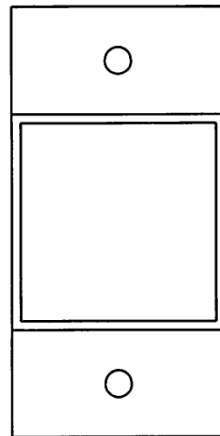
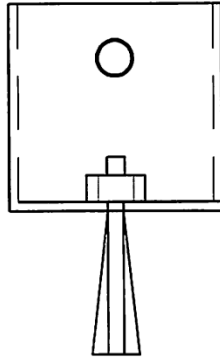
SCALE: 3" = 1'-0"

PART NO.

BB-4x8-Base

03.09.2013





PLAN

**ALL STEEL SHED FRAMES**

PO BOX 30745 PHOENIX, AZ 85046  
CALL: (480) 343-9571  
allsteelshedframes.com

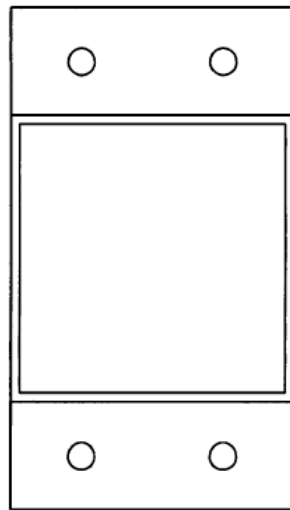
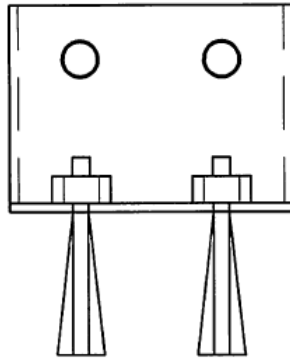
***POST BASE TO CONCRETE***

SCALE: 3" = 1'-0"

PART NO.

**1 1/2"-BB-6x6-Base**

03.09.2013



PLAN

**ALL STEEL SHED FRAMES**

PO BOX 30745 PHOENIX, AZ 85046  
CALL: (480) 343-9571  
allsteelshedframes.com

**POST BASE TO CONCRETE**

SCALE: 3" = 1'-0"

PART NO.

BB-8x8-Base

03.09.2013

**ALL STEEL SHED FRAMES, PHONEIX, AZ 480 343 9571**