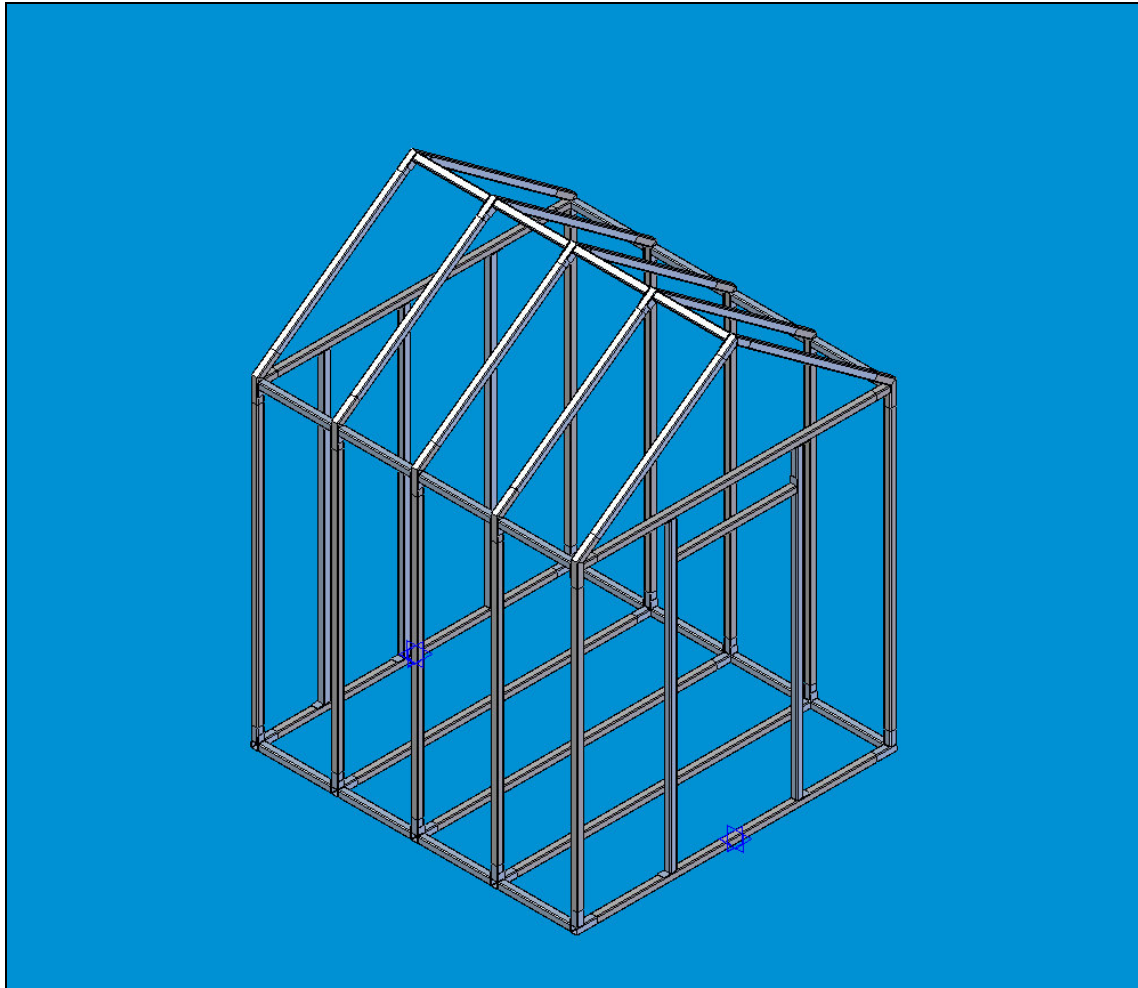


# ALL STEEL SHED FRAMES



ABOVE DISPLAY IS AN 8X8 PORTABLE STEEL SHED FRAME WITH FLOOR STRUTS ON  
2' FT CENTER SPACING USING QUICK BUILD CONNECTORS - 3' DOOR IS PLACED IN SHORT WALL  
(configuration of steel may vary due to production constraints - frames-black - display colors 4 affect)

## THE BEST BUILDINGS START WITH A STEEL BUILDING FRAME

ALLOW 10-21 DAYS FROM DATE ORDERED FOR PRODUCTION, SHIP, DELIVERY OR INSTALL

PRICE LIST FOR "ALL STEEL SHED FRAMES" PRODUCTS INCLUDES THE FOLLOWING:

### ➤ PRICES FOR SITE BUILT / INSTALLED READY TO USE UNITS

To see our product or to place an order Call RON 480 343 9571

Buy an Installed Unit – Buy A Steel Frame – Buy Just The Welded "FAST FIT" Connectors

This price list supersedes any other published price list or offer 11811

## PRICE LIST FOR ALL STEEL SHED FRAMES INSTALLED BUILDINGS

All prices are based on 2 ft centered hoop (frame), 8'high outer walls, 3/12 pitched roof w/short wall or under peak entry

ALL FRAMES MADE IN USA, - ud-11811

## INSTALLED BUILDING PRICES

1. All frames are made with heavy duty 2X2 inch steel box tube on 2 ft centers & come with welded load bearing machine reduced connectors, end wall framing, clips & fasteners. All units come with a pitched roof not a flat roof. Our 2 ft on center steel building frames are the strongest building frames in the small building industry.
2. Installed price includes steel frame, 3/12 pitched roof, conventional 4x8 panel siding, trim, 20 yr shingled roof, plywood floor, 3' X 6' ft wood framed shed door, vent, delivery, leveling up to a 4 inch drop additional leveling billed @ \$65 per hr, leveling blocks & installation labor, clean up job site & installation of anchors. Anchors to be provided by client..
4. On installed units entry door to be placed under the peaked wall. Door provided with installed units will be a 3 FT. wide X 6 FT. high wood framed shed door. All Buildings unpainted. Painting or Stucco available as options.
5. We now offer a barn roof design – ADD 10% TO THE PRICES BELOW to arrive at a barn roof price.
6. Low profile units available for **HOA COMPLIANCE** – Must call for pricing.
7. Prices on all installed units & frame kits include machine reduced connectors.
8. For pricing on steel building frames only please see FRAMES ONLY price list

LARGER DO IT YOURSELF BLDG FRAMES & STEEL FRAME KITS AVAILABLE – DESIGN & ENGINEERING EXTRA

### 8 FT WIDE BUILDINGS INSTALLED PRICE

<b>8x6 = \$1465</b>	<b>8x8 = \$1707</b>	<b>8x10 = \$2070</b>	<b>8x12 = \$2378</b>
<b>8x14 = \$2680</b>	<b>8x16 = \$3007</b>	<b>8x20 = \$3673</b>	<b>8x24 = \$4288</b>

### 10 FT WIDE BUILDINGS INSTALLED PRICE

<b>10x10 = \$2312</b>	<b>10x12 = \$2670</b>	<b>10x14 = \$3052</b>	<b>10x16 = \$3380</b>
<b>10x18 = \$3740</b>	<b>10x20 = \$4104</b>	<b>10x24 = \$4789</b>	<b>10x30 = \$5784</b>

### 12 FT WIDE BUILDINGS INSTALLED PRICE

<b>12x12 = \$2907</b>	<b>12x14 = \$3300</b>	<b>12x16 = \$3707</b>	<b>12x18 = \$4095</b>
<b>12x20 = \$4496</b>	<b>12x22 = \$4901</b>	<b>12x24 = \$5298</b>	<b>12x26 = \$5717</b>
<b>12x28 = \$6159</b>	<b>12x30 = \$6498</b>		

### 14 FT WIDE BUILDINGS INSTALLED PRICE

<b>14x14 = \$3510</b>	<b>14x16 = \$3979</b>	<b>14x18 = \$4403</b>	<b>14x20 = \$4835</b>
<b>14x22 = \$5320</b>	<b>14x24 = \$5707</b>	<b>14x26 = \$6116</b>	<b>14x28 = \$6549</b>
<b>14x30 = \$6976</b>			

### 16 FT WIDE BUILDINGS INSTALLED PRICE

16X16 = \$4099    16X18 = \$4826    16X20 = \$5355    16X24 = \$6318  
16X28 = \$7294    16X32 = \$8270    16X36 = \$9246    16X40 = \$10222

### 18 FT WIDE BUILDINGS INSTALLED PRICE

18X18 = \$5398    18X20 = \$5943    18X24 = \$7039    18X28 = \$8140  
18X32 = \$9232    18X36 = \$10327    18X40 = \$11,423

### TO SEE OUR PRODUCT OR TO ORDER CALL 480 343 9571

All buildings are designed to be free standing non-habitable portables

### OPTIONS OFFERED ON INSTALLED UNITS – ASK US ABOUT SPECIAL OPTONS IF NOT LISTED BELOW

3' Ft OR 4'ft Wide' X 6' Ft High Conventional welded steel framed Shed door – Included in all installs - N/C  
Double Shed Doors 5' = (2- 2'6 drs") 6' = (2- 3ft drs) X 6' High - 1st door included in the installed price- 2<sup>ND</sup> Door Add \$95  
3' Ft X 6'8" High Pre Hung Steel entry door CALL FOR PRICE  
6' Wide X 6' 8" High double swing out steel security doors CALL FOR PRICE  
F4' Ft Wide roll up door for storage or motorcycle garage CALL FOR PRICE  
10 Ft High outer walls add 20% to base piece of installed unit or frame purchased  
8/12 Pitched Roof Add 4% to the Frames Only price  
Anchors - (PROVIDED BY PURCHASER/WE INSTALL)  
Lofts offered are 2 Ft deep by the width of the building = CALL FOR PRICE  
Sky-Lights 2' x 2' = \$175 or 2' x 4' = \$250  
Shelves – Heavy Duty 18" Inches deep = CALL FOR PRICE  
Heavy Duty work benches 24" Inches deep = CALL FOR PRICE  
2' X 2' Window = \$145 - 2' X 3' Window = \$175 - 3' X 3' Window = \$210 - 3'x4' Window = \$245  
8' X 7' Roll up garage doors for larger units – CALL FOR PRICE  
Upgraded - heavier steel floor struts & plywood – 4 heavy loads, cars, trucks, machinery etc - CALL FOR PRICING  
Upgraded Custom Exterior Options - siding, roofing, windows = stucco, vinyl, cement siding, insulated windows,  
40 year dimensional shingle, steel or tile roofing & a lot more. CALL FOR PRICING ON SPECIAL UPGRADES.  
Insulation packages available on installed units. CALL FOR PRICING  
Electric Wiring available. CALL FOR PRICING  
Solar light w/ motion detector CALL FOR PRICING  
Covered Porches, Painting & Stucco available - CALL FOR PRICING  
Must be 3 ft of clearance around & above building site for erection – if we clear area its \$65 per hour.

On all builds electric power to be within 75 ft of build or other arrangements must be made to bring a generator.

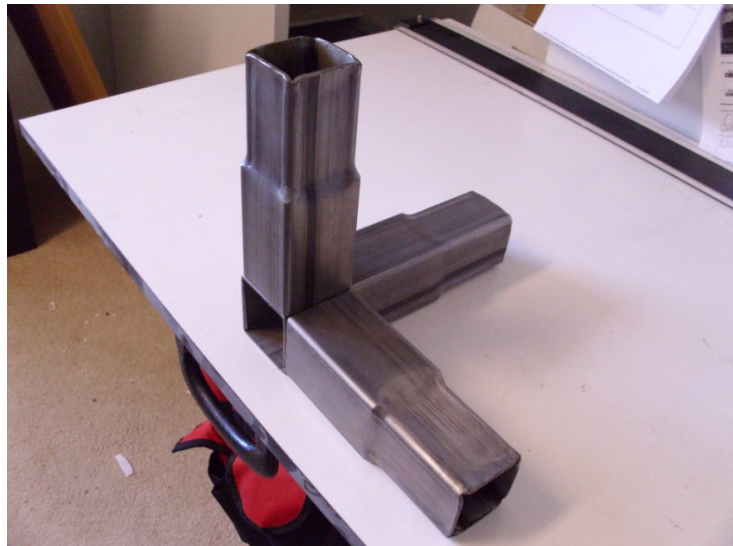
Customer responsible for bldg permit, code, city & county compliance

Buildings under 120 sq ft do not need a building permit – larger than 120 sq ft drawings available where no permit is being pulled. 120 sq ft or larger bldg where permit is going to be pulled engineering is available for an extra fee.  
Prices may change without notice due to the volatile nature of the steel industry's wholesale pricing policy & gas prices

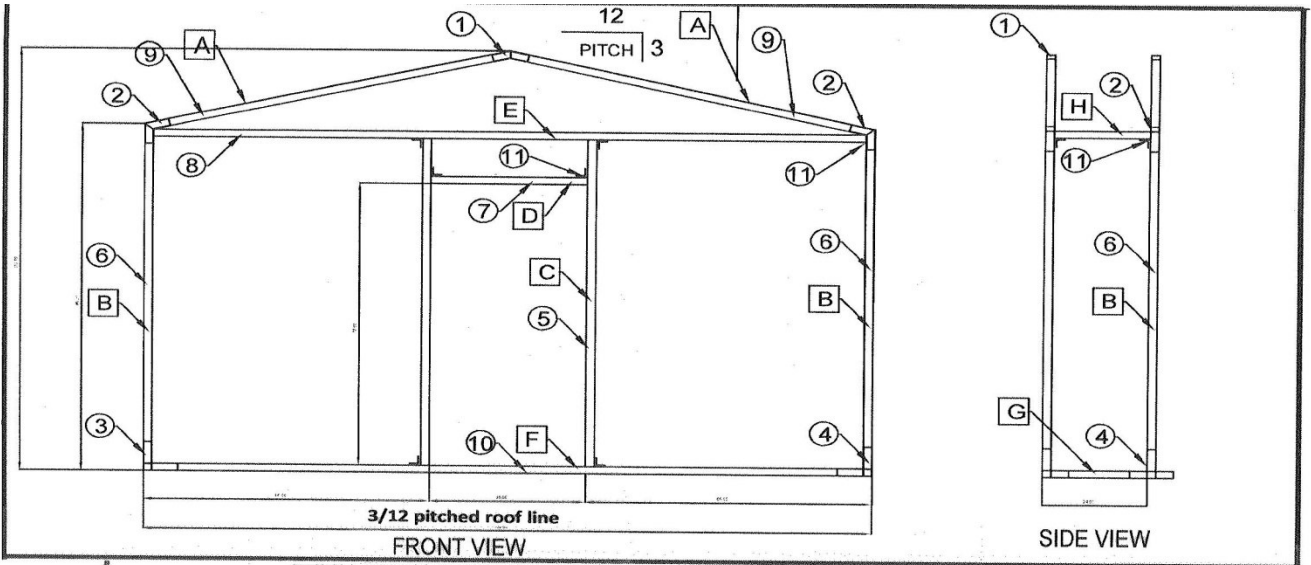


## **Reduced End or Machine Reduced**

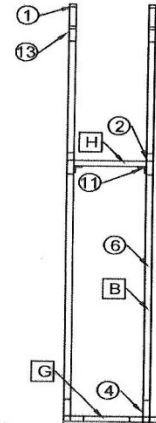
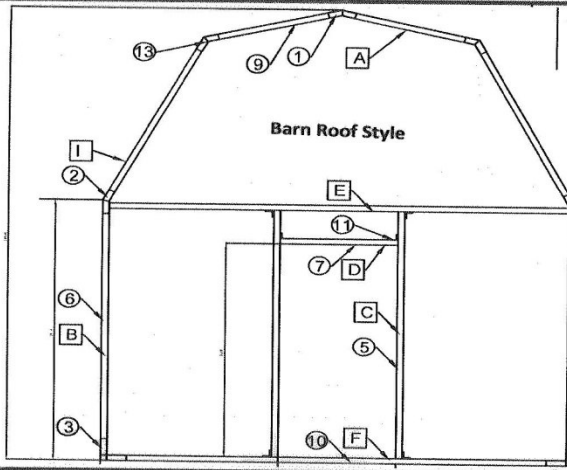
**The Above Connectors Allow Assembly of Any Building on Our Price List**  
**Top two on the left are used when not putting in a floor and applying to a concrete slab**  
**Top two on the right are used when putting in floor struts for a wood floor**  
**Bottom 6 connectors make up the 3/12, 8/12 or barn roof lines offered.**



**This unpainted connector shows the reduced ends better than the painted ones above**  
**BELOW ARE THE ROOF LINES WE OFFER**  
**CUSTOM DESIGN & ENGINEERING AVAILABLE FOR EXTRA FEES**



R  
O  
O  
F  
S  
T  
Y  
L  
E  
S



R  
O  
O  
F  
S  
T  
Y  
L  
E  
S

